

John Deere XUV 825i/625i MA11790

Verify that all hardware and parts are included in your package.

John Deere XUV 625i/825i Plow Mount

Item	Qty	Description
1	1	MA11790 Plow Mount
2	2	M10 x 35mm 8.8 Bolts
3	2	M10 Flat Washer
4	2	M10 Nylock Nut

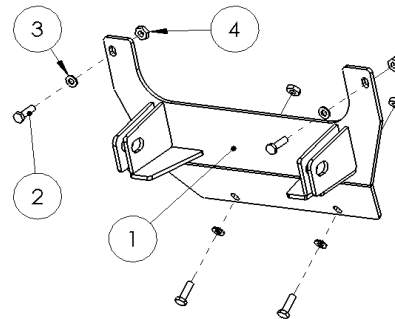


Figure 1

Installation Instructions:

1) Your plow mount will attach over the metal factory brush guard. Start by removing the two bolts on the outside of the front bumper. Hold the plow mount up to the machine as seen in **(Figure 2)** and insert two of the included M10 x 35 bolts, washers, and Nylock nuts. Do not tighten the bolts at this time.

2) Secure the bottom of the mount to the frame using the other pair of M10 bolts, washers and Nylock nuts. **(Figure 3)** Tighten the bolts to no more than 29 ft-lbs of torque.

3) Attach your plow using the Quick Release Pins included in your plow kit. Two large washers are included in your plow hardware kit that secure the Quick Release Pins into the mounting holes as they are slotted to provide the flattest cutting surface. Press the washers over the Quick Release Pins once they are inserted through the plow and plow mount.



Figure 2



Figure 3

